

INFORMATION WEBINAR

The Open University BSc Nursing Degree Programme

Stephanie Foster Professional Lead, OU Nursing Programme (NI)

Meg Hughes: Staff Tutor

Dr Una St Ledger: Staff Tutor

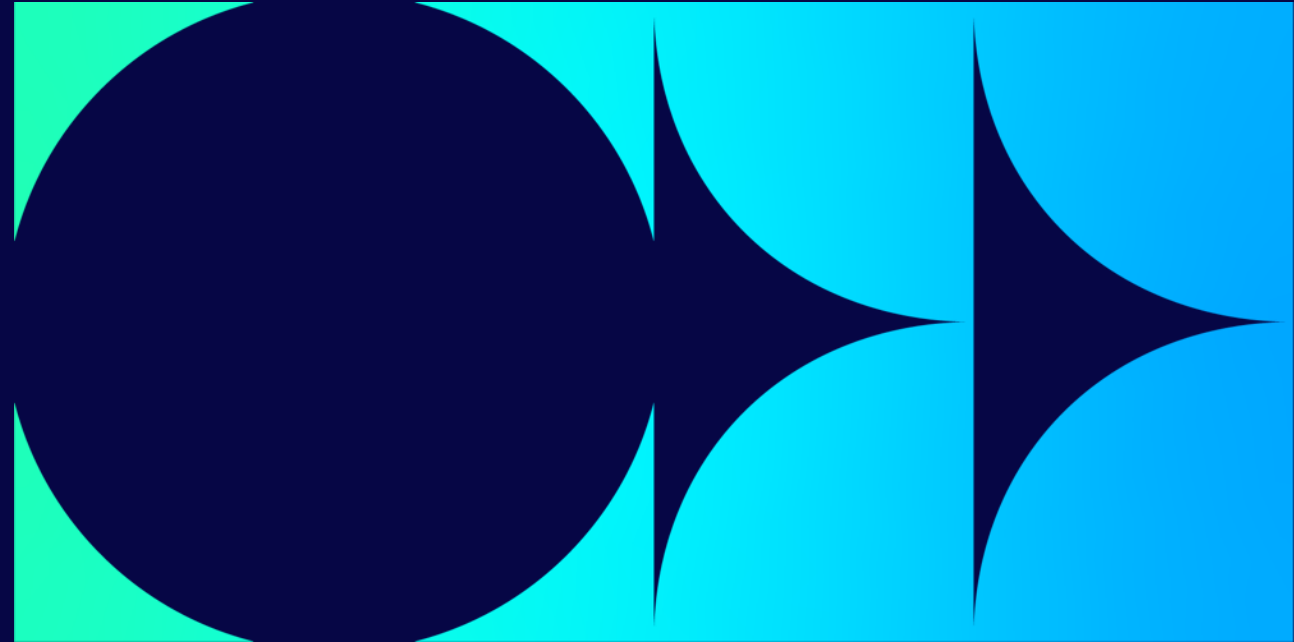
Keri Finlay: Faculty Coordinator

Aurelia Iannotta: Faculty Coordinator

Rachel Mattheson: Practice Learning Assistant

FACULTY OF WELLBEING EDUCATION
& LANGUAGES

12th & 13th January 2026



Welcome to OU Nursing Programme Webinar 2026

Outline of Presentation

Welcome	Introduction and setting the scene
Who we are	Key links, contacts
Structure	OU BSc Nursing Programme
Part 1	Brief Overview of Part 1 of the programme
2026 Recruitment	Application processes, key dates and entry criteria
Trust perspective	Patrick Johnston Sheridan, SHSCT (12 th Jan); Carly Thompson, NHSCT(13 th Jan)
Student perspective	Kate McEvoy , SHSCT (12th Jan) and Cheryl Mogeey, BHSCT (13th Jan)
Q&A	Opportunity to ask questions

Introduction

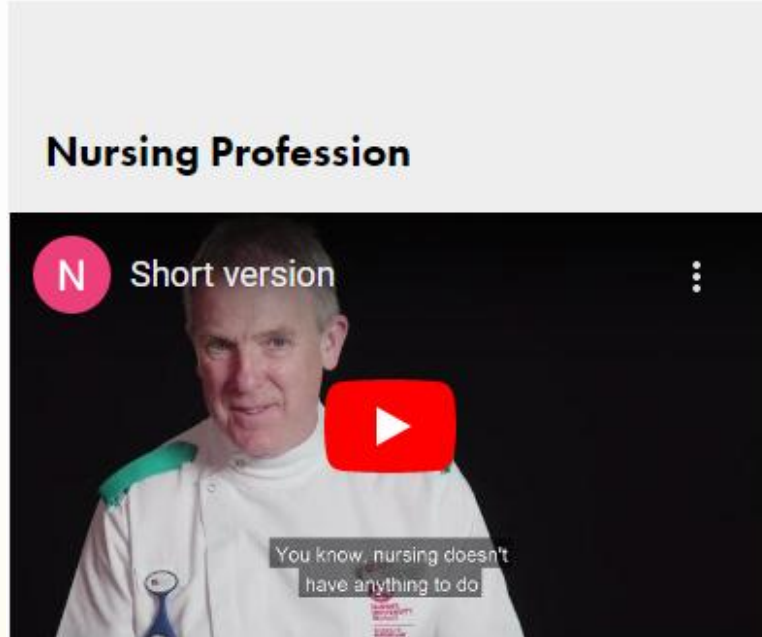
The Pre-Registration Nursing Degree BSc Programme

The Open University has offered a pre-registration nursing programme since 2004 in Northern Ireland, working in partnership with all five Health and Social Care Trusts and the Independent Sector.

The Programme offers the following pathways:

- Adult
- Mental Health
- Learning Disabilities
- Children and Young People

Setting the scene



Nursing: a career for all

[OU Future Nurse Programmes | The Open University in Northern Ireland](#)

- ▶ You will be sent a link in the next two weeks which will give you access to a recording of the webinar, a copy of this presentation and an FAQ document.

Who we are

Key links and contacts

The Open University Nursing Team in Ireland

NI Professional Lead

Stephanie Foster



Interim Nation Manager

Staff Tutors

Monica



Karen



Siobhan



Una



Paul



Robert



Stephanie



Meg



The Open University Nursing Team in Ireland

Faculty Team

Faculty Coordinators

Keri



Antonia



Aurelia



Faculty Assistants

Rachel



Nana



Practice Based Learning Assistants

Emma Kate



Eunice

Practice Education Coordinators/ Education Leads

BHSCT

Carol Chambers

SHSCT

Patrick Johnston-Sheridan

SEHSCT

Tracy Gibney

NHSCT

Carly Thompson

WHSCT

Tracy McGilligan

Structure

Open University BSc Nursing
Programme

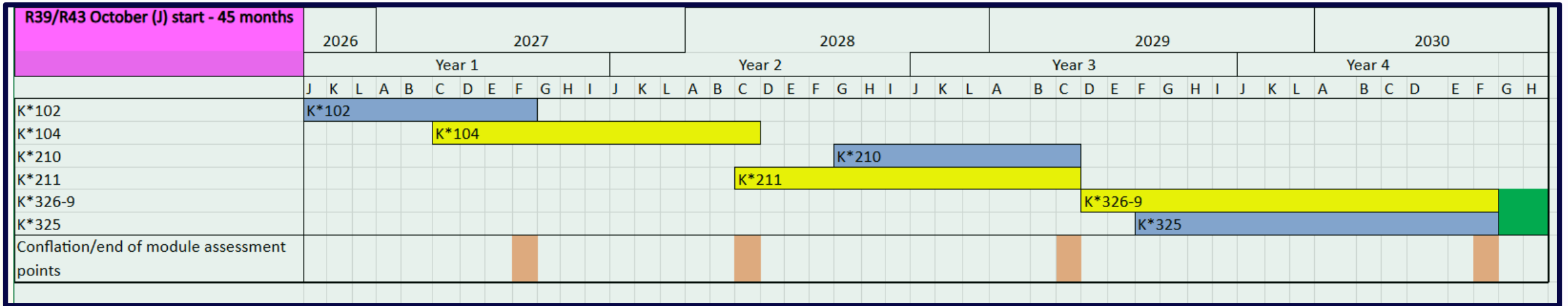
Programme Structure

4 Year Part Time Programme

		Theory	Practice
Part 1		K102 Introduction to health and social care (60 credits)	K104 Introduction to healthcare practice (60 credits)
Part 2		K210 Understanding Nursing: knowledge and theory (60 credits)	K211 developing nursing practice (60 credits)
Part 3		K325 Assimilating nursing: knowledge and theory (60 credits)	Becoming an autonomous practitioner: K326 Adult K327 Mental Health K328 Learning Disability K329 Children and Young People (60 credits)



Potential programme structure from 26J onwards for illustration (K102 26J and K104 27C)



Student Timetables

You will receive a student timetable at the start of each 'Part' (i.e: Part 1/Part 2/Part 3) of your study.

Timetables illustrate what weeks and how many hours you will:

- ▶ Work in your base
- ▶ Complete in your placement area
- ▶ Be entitled to take time-off to study

Part 1 of The Programme Consists of 2 modules

K102: Introduction to health and social care
(starts Oct 2026). Theory module.

K104: Introduction to healthcare practice
(starts March 2027). Practice based module.

K102 Introduction to health and social care

- ▶ Part 1 of the programme
- ▶ 60 credit module
- ▶ 8 month duration
- ▶ Four nations approach to content
- ▶ Online delivery
- ▶ Strong focus on theory that underpins care delivery
- ▶ Nursing and social work activities to reflect integrated care delivery



K102 Assessment

- ▶ **Five tutor marked assignments (TMA's)**
- ▶ **One end of module assessment (EMA)**

K104: Introduction to healthcare practice

- ▶ 60 credit module
- ▶ Practice-based module
- ▶ 16 learning guides alongside placement
- ▶ Supported by and work closely with your OU Practice Tutor
- ▶ Supported in practice by Practice Supervisors (PS)
- ▶ Assessed in practice by Practice Assessor (PA)



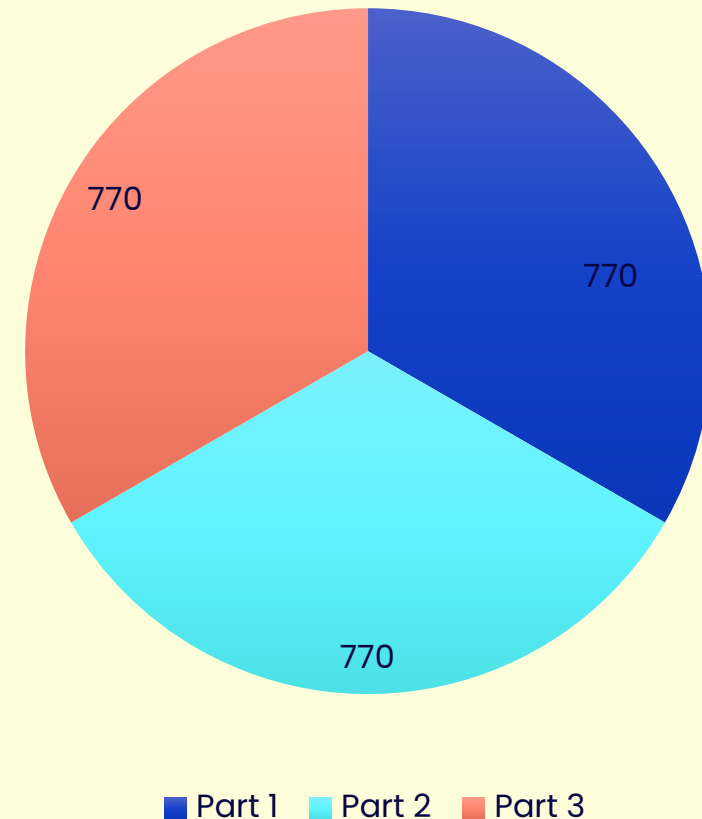
K104 Assessment

- 2 tutor-marked assignments (TMAs)
- A practice assessment interview (PAI)
- An interactive computer-marked quiz (iCMA 43)
- An end-of-module assessment (EMA)
- Successful completion of the electronic Northern Ireland practice assessment document (eNIPAD) of your practice learning.

Learning in practice

- ▶ **2300** hours of practice experience must be achieved across the entire qualification.
- ▶ **770** hours to be completed in each Part of the programme.
- ▶ **3** placements in each Part of Programme totalling **9** placements across the 3 Parts of programme over 4 Years.

Hours



Practice Learning Experiences (Placements)

- ▶ Placements are predominantly within the boundaries of your employing Trust and when allocated, will not be changed (only in exceptional circumstances)
- ▶ Placement allocations are limited, and students will have to travel to placements across their respective trust sites
- ▶ Required commitment to travel to placements
- ▶ Annual leave is **not permitted** during placement weeks (only in very exceptional circumstances)

2026 Recruitment

Application key dates, processes, and eligibility

Keri Finlay: Faculty Coordinator

When do I apply?

To obtain an online application pack, send your name and email address to:

Ireland-nursing-applications@open.ac.uk or click on QR Code.

Applications will be released **14th January 2026**

Deadline for application submission **28th February 2026**

Screening of applications will take place **3rd – 31st March 2026**

Interviews will take place between **13th April – 19th May 2026**

Notification of success in gaining a place **end of June/early July 2026**

Commence Programme **Oct 2026**

Am I eligible to apply?

- ▶ You must be working in one of the five HSC Trusts in Northern Ireland.
- ▶ It is an essential requirement that you hold a permanent contract of 26 hours or more.
 - **IMPORTANT NOTE:** Term time contracts cannot be supported. If you are on leave during 'term times', you will not be able to fulfil your academic and placement requirements. You will need to discuss this further with your line manager if applying.

Am I eligible to apply: English/Maths criteria

- ▶ You **must have English and Maths** G.C.S.E. grade C (or equivalent) and be able to evidence your qualification with certificates (or Unique Learner Number – ULN) **when submitting your application.**
 - The OU must ensure that the entry criteria set by the Nursing and Midwifery Council (NMC) Standards, are met at the point of application to the programme.
 - The **minimum English and Mathematics standards** for entry to the Pre-registration Nursing Programme are either: **GCSE Grades A – C** or **equivalent**, for example, **Essential Skills, Key Skills, Level 2 in adult literacy and application of number.**
 - K102 (if completed and passed before the application deadline) will be accepted as an equivalent qualification for G.C.S.E. English.
 - If you have international qualifications that you believe are equivalent to English or Maths G.C.S.E grade C in the UK, you must supply a certificate from UK ENIC (previously NARIC) to support your application. The ENIC statement must state the subjects it is evidencing.

Am I eligible to apply?

- ▶ You must have support from your line manager and budget holder when submitting your application, including approval and support for the field of practice you have chosen to study (signatures will be required).
- ▶ Good character, evidenced through self-declaration (at the point of application) and an enhanced criminal record disclosure (should you be offered a place on the programme).
- ▶ Good health, evidenced through self-declaration of health status, occupational health screening, review of previous sickness and absence record.
- ▶ One reference – must be from your current line manager.
- ▶ One Academic reference – if previously started but did not complete a professional programme at another university.

Important things to note

- ▶ Once you start the programme you cannot switch to another field of practice (AD / MH / LD / CYP) at any stage during the programme.
- ▶ Commissioned numbers for each field of practice are agreed with the Department of Health. It is important that you make a well-informed decision, talking with your line manager, before applying to the programme.
- ▶ The application form for the 2026 intake will be **online** and guidance will be issued to help you navigate the online form.
- ▶ A personal statement is no longer required as part of the application.

The Online Application Form

Please consult all guidance notes before starting the online application.

The online application process is divided into 2 parts:

1. Online Form to be completed in full in one sitting and electronically submitted.
2. Supporting documents to be completed in full and sent in one email to Ireland-Nursing-Applications@open.ac.uk

The Online Application Form

PART 1

- ▶ **Part 1 is online** and has 9 sections; (1) personal details; (2) education history; (3) qualifications; (4) credit transfer; (5) current employment; (6) employment history; (7) additional information; (8) declaration of character; (9) Your confirmation and signature.
- ▶ It is important you gather all information required in Part 1 of the application before you start the form. **The form must be completed in one sitting and cannot be saved as you go along**. Do not leave your application open and come back to it at different times as it may not complete correctly and at the end of the form it may not submit.

The Online Application Form

PART 1

Information to prepare before submitting the online application:

- Have a complete overview of your employment history since leaving full time education (including months and years). If there is a gap (even a month) please state, why; i.e. I was seeking employment, or I was a carer etc. Failing to explain gaps may affect the progress of your application.
- Have a complete overview of your education history, including dates (secondary and higher education if applicable).

The Online Application Form

Part 2

Please consult the guidance notes for more information on the documents below and on how to save and send these documents to the OU.

- ▶ **You are required to submit the following documents to ireland-nursing-applications@open.ac.uk before the closing date, **28th February 2026**.**
 - Application Part 2, Manager and Senior Manager/Budget Holder Support
 - Employer Reference
 - Maths/Numeracy Certificate
 - English/Literacy Certificate
 - Photographic Evidence
 - Evidence of Name Change (if applicable)

The Application: Important points

- ▶ Where there are gaps in your education or employment history, please make a note in your application of why that is.
- ▶ There must be **NO** unexplained gaps in your education.
- ▶ There must be **NO** unexplained gaps in your employment history.

A complete application form must include:

- ▶ Application Part 1 (COMPLETED ONLINE)
- ▶ Application Part 2, Manager and Senior Manager/Budget Holder Support (EMAILED)
- ▶ Maths Certificate (EMAILED)
- ▶ English Certificate (EMAILED)
- ▶ Employer Reference (EMAILED)
- ▶ Photographic Evidence (EMAILED)
- ▶ Evidence of Name Change (if applicable, EMAILED)

Student Perspective

The Open University Nursing Programme

Kate McEvoy BSc. Nursing –First Class Hons.

Taken up RN Post in Craigavon Area Hospital in Ward 1 West



Why choose the Open University?

4 year course

Earn as you learn

OU resources

Amazing support from tutors

Other opportunities e.g. Student Leadership Challenge, Masterclass Tutorials

Study leave on and off placement and mileage expenses

Working for the trust

Your Application

Be prepared, don't rush

Complete every section

TIPS: Proof-read, Text-to-speech, another set of eyes

Have all your supporting documents ready – including qualification certs

Evidence-base your answers with NMC/Trust Values/6 C's

Your Interview



Why
Nursing ?

Review your application form, why do you want to study nursing?

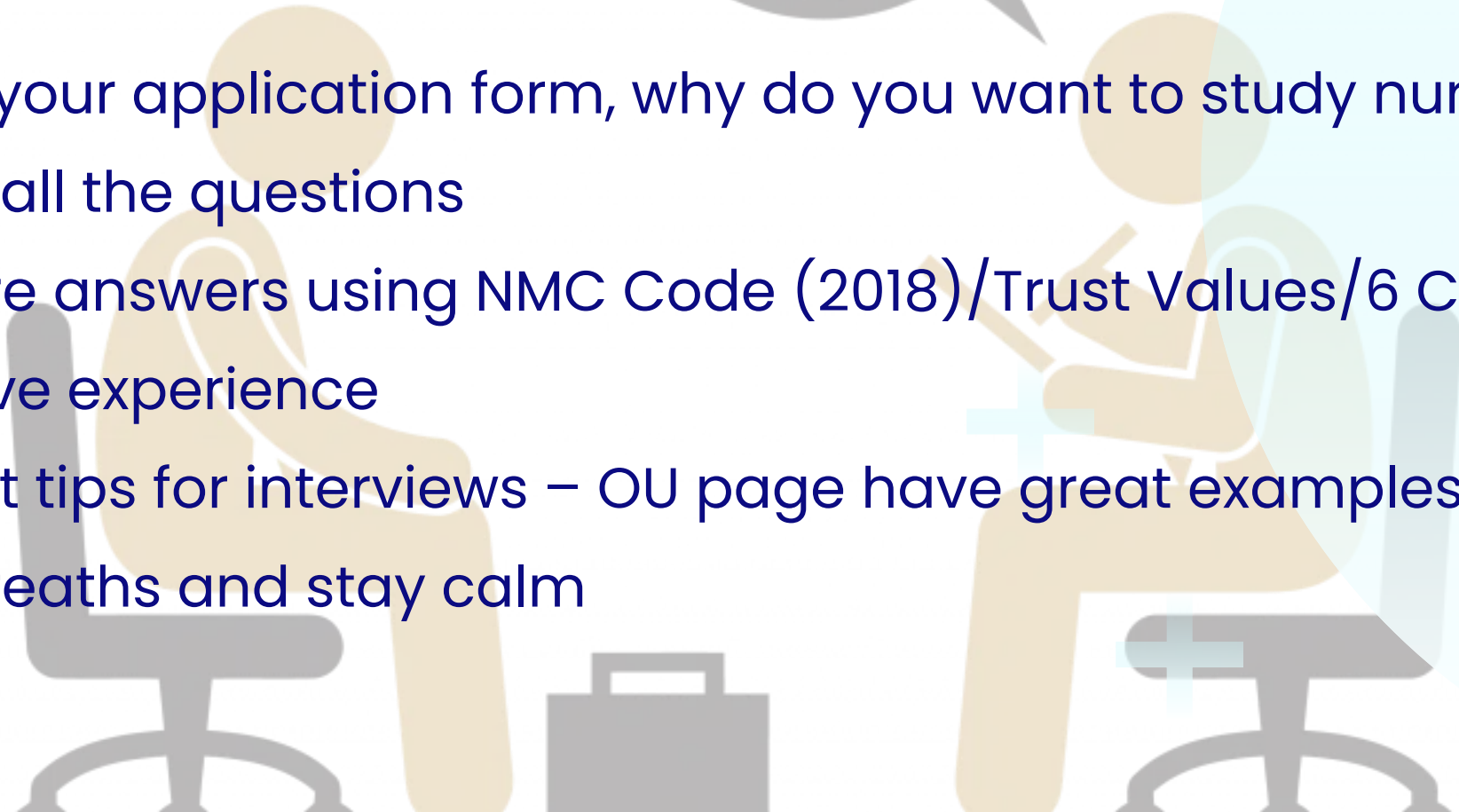
Answer all the questions

Structure answers using NMC Code (2018)/Trust Values/6 C's

Reflective experience

Seek out tips for interviews – OU page have great examples

Deep breaths and stay calm



When you are Successful

Practice placements within your own trust area

Study theoretical knowledge and apply it to your practice

Make the most of contact with other students

Make the most of all your placements

Beginning of your journey

Enjoy – 4 years goes so fast

I'm now a NQN working in ENT/Urology in CAH in my Preceptorship



Good Luck

Good Luck

Good Luck

Good Luck

Good Luck

The Open University Nursing Programme



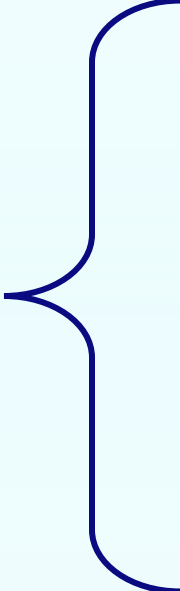
Cheryl Mogeey

Final Year Pre-Registration Nursing Student (Mental Health)

NIPEC Student Excellence Award Winner 2025



Why Choose The Open University?



- Flexible Learning
- Earn while you learn
- Support from tutors & managers
- Study from home
- Work/Life balance

The Application Form



- Read all guidance, carefully and repeat.
- Give yourself plenty of time
- Familiarize yourself with NMC code.
- Read the Trust Values
- Read "*Future Nurse, Future Midwife*" proficiencies.
(Available on NMC website)
- Ask a nurse to proof-read
- Ensure to include ALL documentation required

The Interview

- Panel interview, be prepared
- Know the 6 C's of Nursing
- Familiarize yourself with the degree content and what will be expected from you.
- Trust Values
- Support from line manager
- Practice
- You tube

If Successful

- Try not to get overwhelmed with course content.
- Time management is vital
- Get excited, this is an incredible opportunity.
- Be proud of yourself :)
- Get to know other students in your cohort.



Nervous about the workload?

- Haven't studied in years.
- Never studied at degree level
- Don't let this put you off.
- The Open University have a fantastic Student Support wrap-around service.
- You will be offered additional tutorials on academic writing & feedback to help you.
- You can do this!



Good Luck!



Trust Education Lead Perspective

Patrick Johnston Sheridan

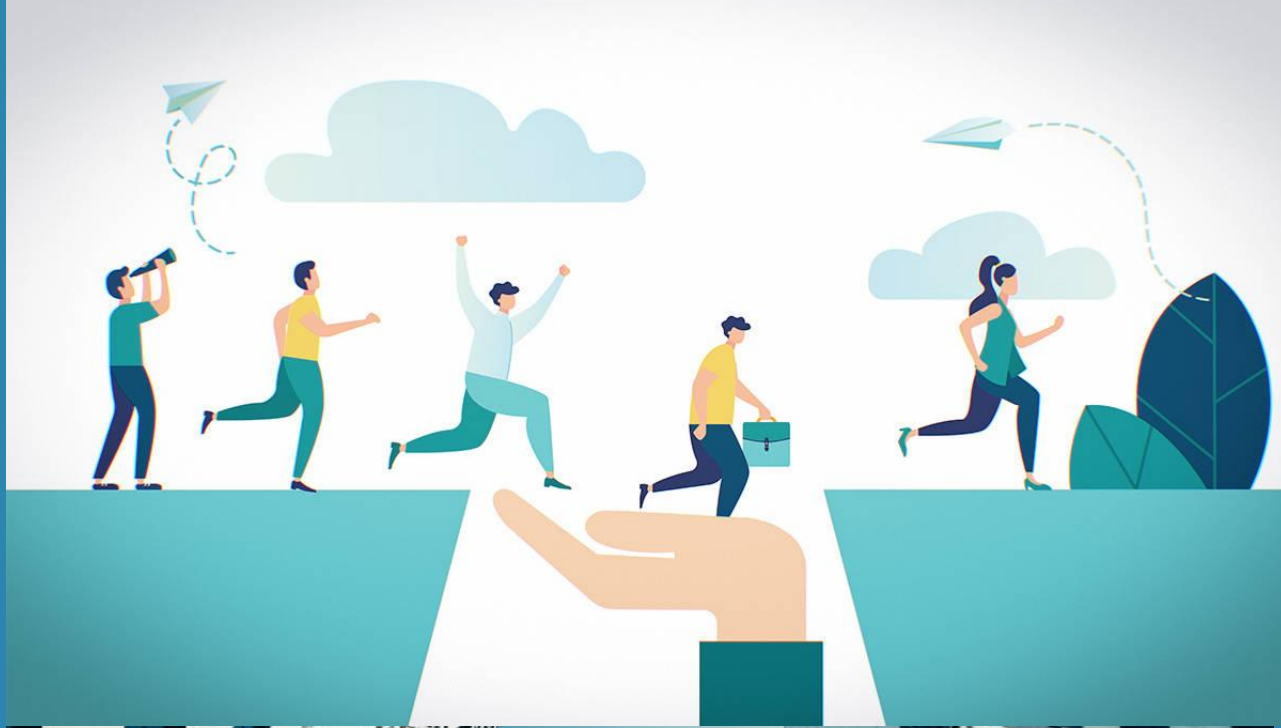


- Interim Lead Nurse for Education and Workforce Development (Southern Trust)

Carly Thompson



- Lead Nurse Education and Development (Northern Trust)



Trust Education Lead Perspective

Patrick Johnson Sheridan (12th Jan)

Carly Thompson (13th Jan)



5 Trust Education Leads



 Southern Health
and Social Care Trust
Patrick Sheridan Johnston

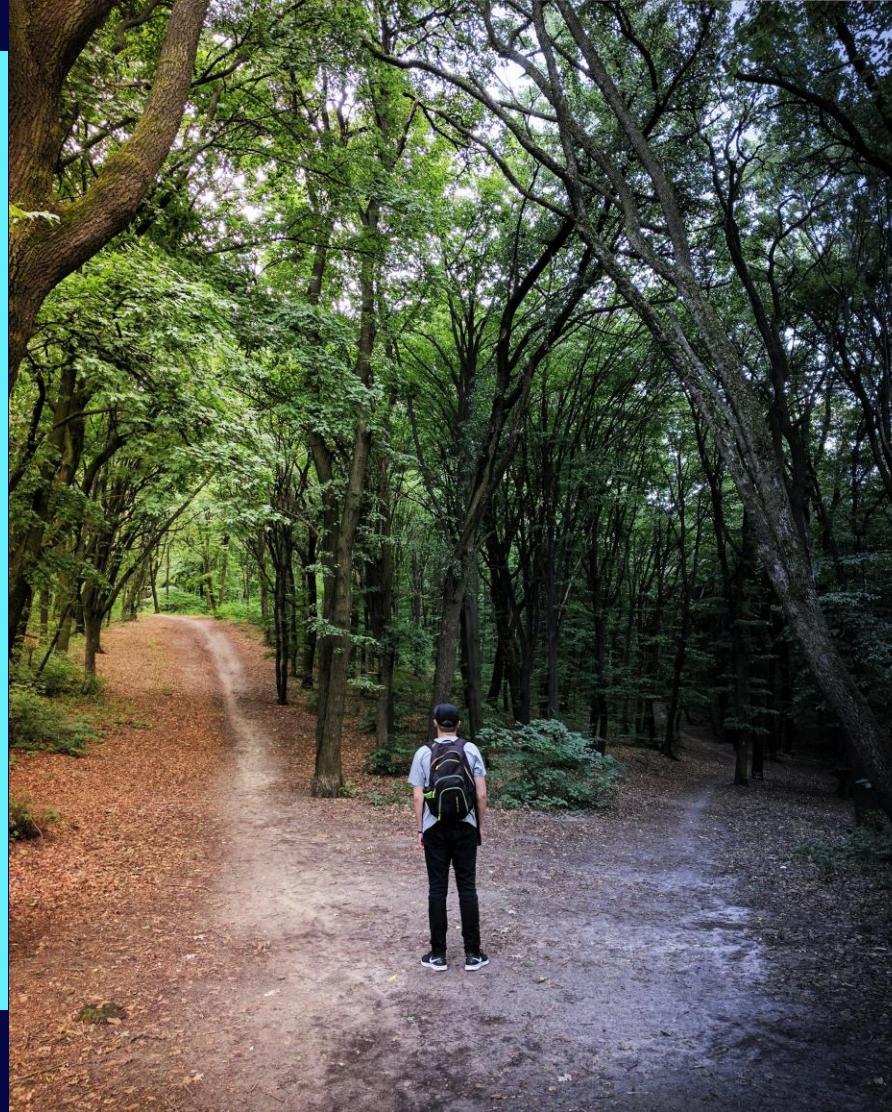
 Northern Health
and Social Care Trust
Carly Thompson

 Belfast Health and
Social Care Trust
Carol Chambers

 Western Health
and Social Care Trust
Tracy McGilligan

 South Eastern Health
and Social Care Trust
Tracy Gibney

- Am I ready to become a student nurse?
- Is this the right time for me?
- What do I need to do to prepare myself?
Think application, think interview, think commencing the programme.
- Have I discussed this with my family and friends?
- Who should I reach out to now? Current OU students



- Have I discussed this with my line manager prior to application?
- Have I reached out to my Trusts Practice Education Team or a Practice Education Facilitators?
- Have I read the OU 'Frequently Asked Questions' document and do I fully understand what I am signing up for?
- What transferable skills do I have?

Who's here to support you?



Your Manager

Trust Practice
Education Team

Lead Nurse Education
or Practice Education
Coordinator

OU Team

Practice & Staff Tutor

Academic Module
Tutor

OU Student Support
Team

Library support



Placement

Practice Assessor
Practice Supervisor
Nominated person
Practice Education
Facilitator

OU Students

Peer Support



Points to Remember



Trust employee reminders

- You remain a Trust employee throughout your programme.
- All annual leave is planned within the programme and cannot be taken when on placement.
- All sickness must be reported to your line manager.
- Uniform is provided and uniform policy applies.

Financial reminders

- You will receive your baseline salary. Enhanced payments will be paid for any unsocial hours worked whilst on placement.
- Travel expenses can be claimed if accrued whilst on placement and where Agenda for change terms are met for such payments.
- The programme takes 4 years to complete.



Good Luck with your applications and interviews

Next step: Have the conversations



Support with additional needs

If you are successful and receive an offer to join the programme, please be advised of the following:

A wealth of support for study-related needs is readily available for all students, such as support from a tutor with assignments and accessible module materials.

All learners are entitled to additional specialist services from OU, but you will need to provide supporting evidence of your disability.

You are entitled to support and adjustments to teaching, assessments and study materials and activities if you have: a physical or sensory disability; an ongoing health condition; an ongoing mental health difficulty; a specific learning difficulty such as dyslexia; an autistic spectrum condition; a speech or language difficulty.

Useful contacts for disability support can be found by following the link:

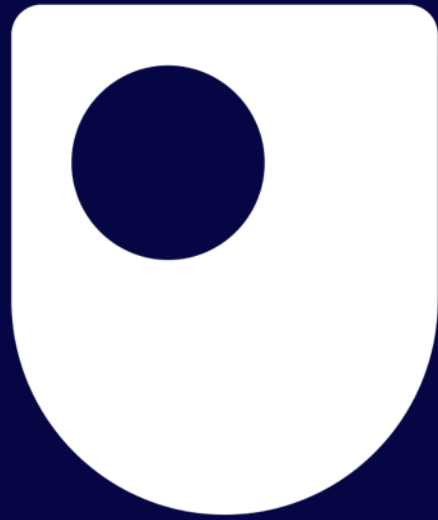
[Contacts for disability support | Help Centre | The Open University](#)

Questions

Any follow up questions, please direct these to:
Ireland-nursing-applications@open.ac.uk



Thank you and good luck



**The Open
University**

Ireland